

LOVELL

c.1840

— 441 Lovell Drive Locust Dale, Virginia 22948 —



Exclusively Listed









A Taste of Virginia

Located in the Virginia Piedmont region, just east of the Blue Ridge Mountains, where you find a commitment to land preservation, rests Lovell c.1840, a Georgian Manor house, on 165 +/- acres with three ponds, spring, and rolling farmland bordered by the Robinson River.

Surrounded on three sides by properties under conservation easement, Lovell enjoys the romance of timeless beauty and the tradition of the Virginia hunt country. With the owner's permission, horses and riders gallop through the landscape, and you may notice the sound of the hunting horn in the distance.

Lovell enjoys total privacy with a mile-long horseshoe driveway. The house sits one-half mile off the public road.



Lovell c.1840 is a stately Georgian Manor house built from brick burned on the farm and laid in Flemish Bond. The hipped roof is the original slate, and shutters frame the windows. The four chimneys once heated the two rooms on either side of the center hall and the four bedrooms upstairs.

The interior walls are solid brick coated in plaster, and the floors are original heart pine. Seen throughout the house are original doors and brass locks. The staircase retains decorative scrolls and paneling.

Each room on the first floor has a ten-foot ceiling and a mantled fireplace, tiered and decorated with a curved apron. The second floor has nine-foot ceilings, four bedrooms, and a full bathroom.

There are 3 additional bedrooms, bathroom, laundry room and original dining room in the walk-out English basement, making the original core of Lovell a 12-room house.

A covered walkway once led from the outside kitchen, which was in a separate brick building, laid in Flemish Bond, to the basement former dining room of the main house.



The Center Hall

Entering through the front doors framed with a glass transom and side lights set in the double wedding ring style, you find intricate woodwork and original heart pine flooring. The staircase is ornate with paneling and decorative scrolls. The stunning nine-foot wide center hall has two large rooms on each side, featuring original mantled fireplaces, tiered and decorated with a curved apron.





The Music Room

As you enter the center hall, the music room greets you to your left and opens to the living room with large inlaid Jefferson pocket doors, said to be copied from Monticello, creating a space for entertaining and gatherings.



Music from the piano softly floats to the living room and center hall.



The Living Room

The living room, with a gas fireplace insert, is elegantly appointed with intricate molding and wainscoting.



The Library

The library, currently used as a school room, is to your right as you enter the center hall and connects to the butler's pantry through the side door.



Butler's Pantry

The butler's pantry with two dishwashers offers ease of entertaining and connects to the kitchen in the new wing and the back stairs.



Powder Room

Thoughtfully designed, the powder room with custom cabinetry and Marvin double sash windows was added by the current owners when they designed and built the new wing of the house.



Second Floor

The second floor features nine-foot ceilings, four large bedrooms, and a full bathroom. Each bedroom has an original fireplace.

There are windows at both ends of the landing bringing in natural light.



The Basement Level

The finished English walk-out basement features three additional bedrooms with one original fireplace and two imitation fireplaces, a partial kitchen, a laundry room, and a full bathroom.



New Wing

The current owners designed and built a new wing to the house over three years, 2018 - 2021. It includes a first-floor gathering space, a second-floor primary suite and office, and a terrace level with a garage, laundry room, and wood storage.

The great room was designed as a first-floor gathering space featuring a gourmet kitchen, random-width pine floors from New Hampshire installed with exposed square cut nails, a custom cooking fireplace, a dining area, and a comfortable sitting area. Windows are true divide Marvin double-hung windows providing expansive views of the farm, garden, and mountains.

The porch is 12x18 custom post and beam built with a brick hearth, cedar floor and views of the farm.

The gathering room enjoys an expansive garden view with views of the farm and hayfields in the background.





The Custom Cooking Fireplace

There is a custom cooking fireplace with a wrought iron crane, pot hooks, and an iron bar to lower and raise cooking pots. The antique mantle and raised panel shutters above are beautifully detailed.





Kitchen

- Bertazzoni 6 Burner Gas Range
- Bosch Double Ovens
- Bosch Dishwasher
- Samsung Refrigerator
- Kitchen Aid Warming Drawer
- Handmade Cabinetry
- White Pine Flooring
- Pine Counters
- Island Storage

There is plumbing under the island for an additional sink.



The Primary Bedroom Suite

The new wing's primary suite on the second floor has views overlooking the farm and mountains. There is a charming balcony to enjoy the sounds of nature.

- Walk In Closet
- Wide White Pine Floors
- Marvin Windows
- Ceiling Fan



The Primary Bathroom

- Large Tile Walk-In Shower
- Double Vanity
- Wide White Pine Floors
- Marvin Windows
- Custom Shaker Style Doors with iron thumb latch hardware.





The spring-fed pond attracts herons, egrets, geese, and ducks, among other birds.



The Cottages

The Original Kitchen

Remodeled around 1950
Brick Exterior and Soapstone Floor
Living Room, Kitchen, Bath Downstairs
2 BR 1 BA Upstairs
Overlooks Pond



Original Servant Quarters

Brick
3 BR 2 BA
Laundry, Kitchen, LR
Private Pond



The Cottage On The Hill

Vinyl covering logs
3 BR 2 BA
Kitchen, LR
Interior Walls Are Log
Wood Floors



Milk House

Currently Used as Airbnb
Concrete Block
2 BR 1 BA
Living Room, Eat-In Kitchen



The Outbuildings



Airplane Hanger



Bee Hives



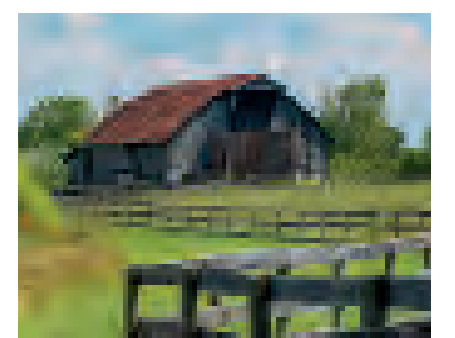
Detached Garage



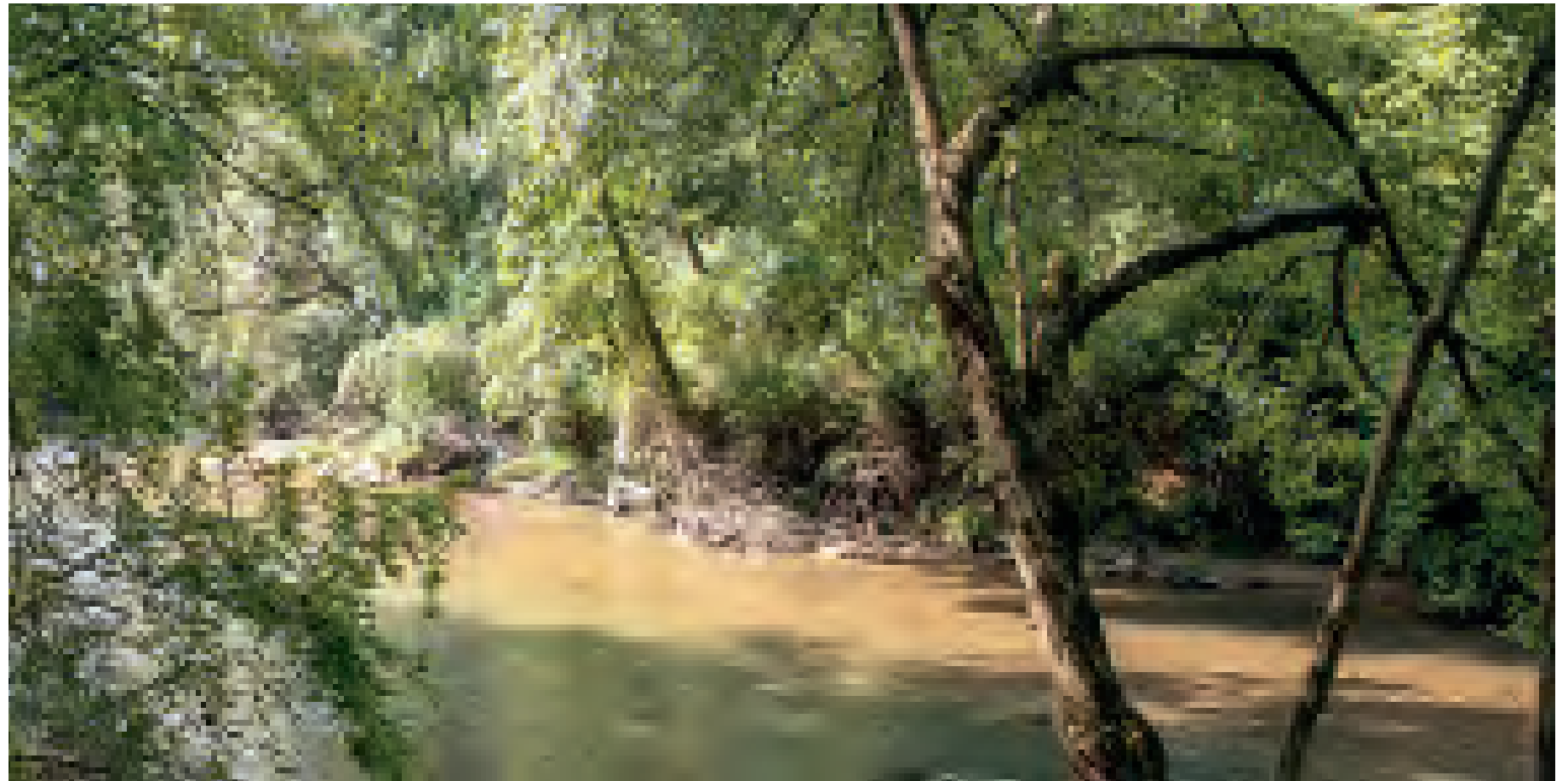
Silos



Barn



Barn



441 Lovell Drive | Locust Dale, VA 22948

Parcel ID: 52-4D

Zoning: A1FP

165+/-Aces bordered by Robinson River

Currently in conservation program for hay production with five years remaining.

Internet: Firefly will be coming - buyer should register.

Current Internet: Verizon Wireless

Electric: Rappahannock Electric

Propane: 250 & 500 Tanks | Amerigas

400 amp service to the house

3 Wells - 1 well for older section and 1 well for the addition. 1 well shared by barns and cottages.

3 Heating Systems - Core house has one heat pump and the new wing has 2 heat pumps.

3 Septics

6 Electric Meters on Property - one for main house, one for large barn, and one for each cottage.

Whole house smart generator that rotates through heat and hotwater one at a time.

3 Ponds

One pond on the property has an access easement on the far side.

20 acres pasture

80 acres reseeded and in hay/crop conservation program.

65 acres wooded

5 Pastures

3 Automatic Waterers

6 Hydrants

Sheep & goat barn redone with pine.

There is a Lovell family graveyard on property.



9-18-98
Date

The plat represents a survey of the above

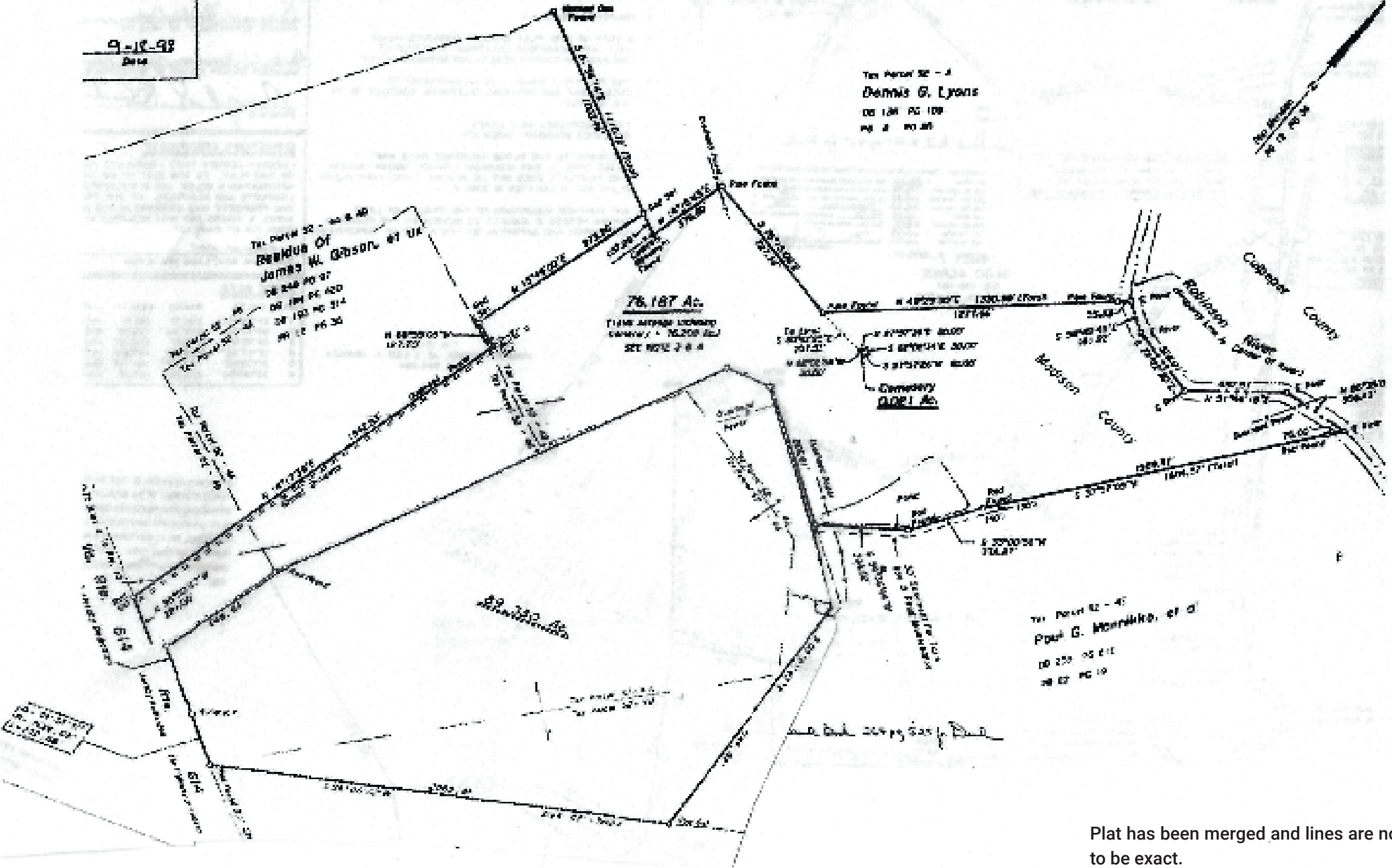
Tract Parcel 32 - 3
Dennis G. Lyons
DB 188 PG 108
pg 2 PG 28

Tract Parcel 32 - 30 & 40
REMBUS OF
JAMES W. GIBSON, et al
DB 248 PG 97
DB 189 PG 100
DB 190 PG 114
pg 12 PG 30

76.187 Ac.
T1484 Average Density
Capacity = 76,200 (200)
SEE NOTE 3 & 4

Tract Parcel 32 - 31
Capacity 1001 Ac.

Tract Parcel 32 - 41
Paul G. Hennrich, et al
DB 250 PG 811
DB 87 PG 19



Plat has been merged and lines are not guaranteed to be exact.



LOVELL c.1840

Listing Agents

Bridget Archer

Pam Dent

Gayle Harvey



Contact your REALTOR
for a showing appointment.

